

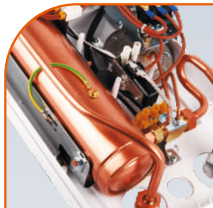
Electric instantaneous  
water heater

# KDH / KDHZ Luxus hydraulic

Water heater  
with reliable construction,  
made of high quality materials



## Most important advantages



**Copper shielded heating elements**  
Reliable technology ensures long life, resistance to water decay and air bubbles.



**Power regulation**  
Allows to set the heater on full power or economic mode.

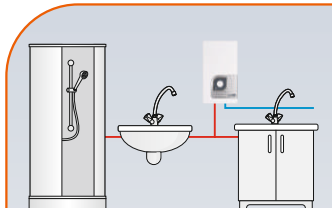


**Regulating valve**  
allows for setting comfortable temperature at a maximum possible flow of water.

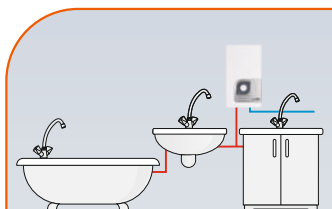


**Automatically switches on 2 steps of heating**  
Automatic "switch on" system and power selection according to the water flow rate.

## Application

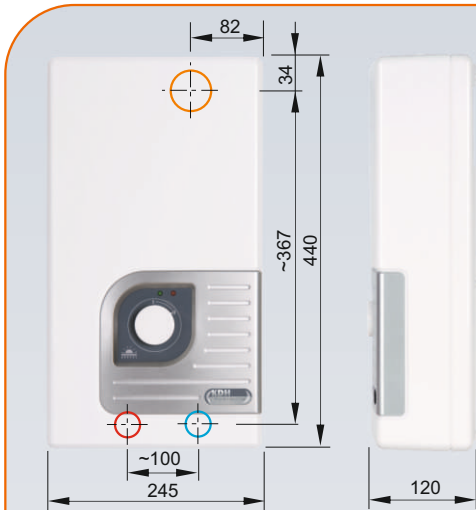


12-15kW



from 18kW

## Dimensions



Supply water pressure 0,15 - 0,6 MPa

Inlet and outlet section 1/2" \* inner thread

Safety class IP 25

\*Inlet and outlet pipes connected to the heater must be made of copper or steel



## KDHZ

Metal case with extra resistance to prevent any damage.  
Perfect for public buildings.

## Technical data

Type	Rated power	Rated voltage	Rated current (A)	Min. connecting wires section (mm <sup>2</sup> )	Efficiency (Δt=30°) (l/min.)
KDH-09 LUXUS	9 kW	400V 3~	3x13,0	4 x 1,5	4,3
KDH-12 LUXUS	12 kW	400V 3~	3x17,3	4 x 2,5	5,8
KDH-15 LUXUS	15 kW	400V 3~	3x21,7	4 x 2,5	7,2
KDH-18 LUXUS	18 kW	400V 3~	3x26,0	4 x 4	8,7
KDH-21 LUXUS	21 kW	400V 3~	3x30,3	4 x 4	10,1
KDH-24 LUXUS	24 kW	400V 3~	3x34,6	4 x 6	11,6

All technical data is based on standards of Central European countries.  
However, Kospel S.A. is fully flexible to adjust its appliances to other standards.